

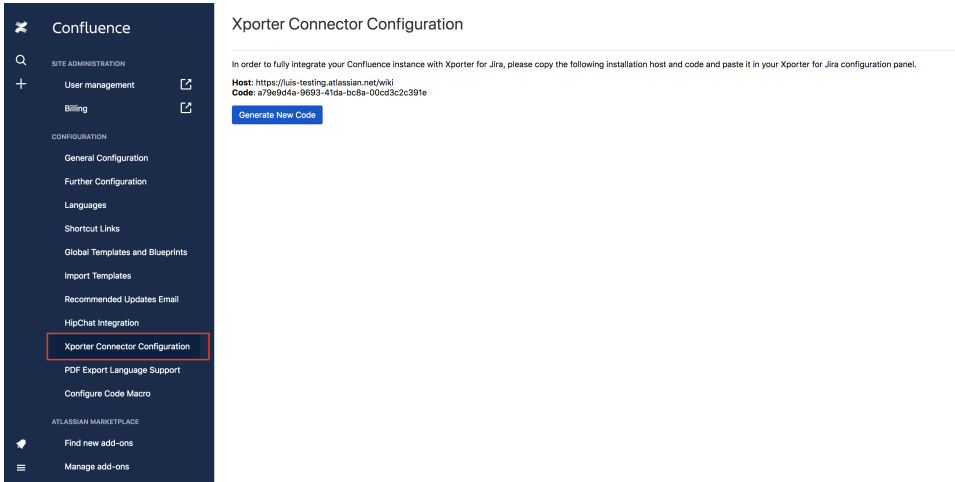
Xporter Connector for Confluence

To set up Confluence integration for **Xporter for JIRA Cloud**, please follow these steps:

- [Xporter Connector Installation](#)
- [Test Confluence integration](#)

Xporter Connector Installation

1. Open the Confluence instance you want to integrate with **Xporter for JIRA Cloud** and navigate to Settings.
2. Under the Atlassian Marketplace menu select *Find new apps*. Search the Marketplace for *Xporter Connector for Confluence* and install the add-on. Alternatively, you can install directly from [here](#).
3. After the installation, refresh the page. Under CONFIGURATION, you should now see the **Xporter Connector Configuration** as shown below:



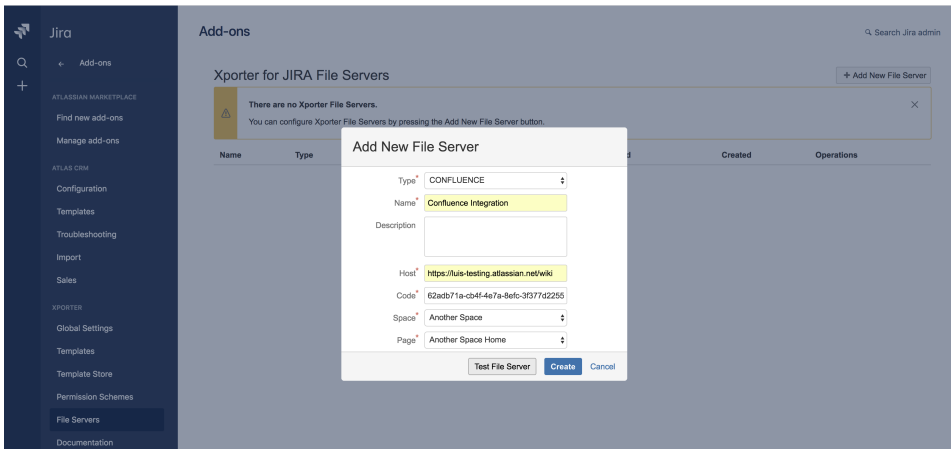
This page allows you to fetch both the host and the installation code you'll need for the next steps of **Xporter Connector** configuration.

Furthermore, you can generate a new installation code, which implies that other integrations you've previously setup for this host will stop working.

Add Confluence integration in Xporter for JIRA Cloud

Now that you have both the host and the installation code, you are ready to set up the Confluence integration in **Xporter for JIRA Cloud**. To do so,

1. Navigate to the **Xporter Cloud** configuration panel (*Jira Settings > Apps > Xporter > File Servers*).
2. Add a new File server. You will be prompted with a modal:



In the *Type* field, select *CONFLUENCE*. Fill the *Name* you want the Confluence integration to have. In the *Host* and *Code* fields, paste the values you fetched from the **Xporter Connector** configuration page. Click *Test File Server*.

1. You will get a message stating that the connection to the Confluence instance was successfully done, and both **Space** and **Page** fields are now populated.

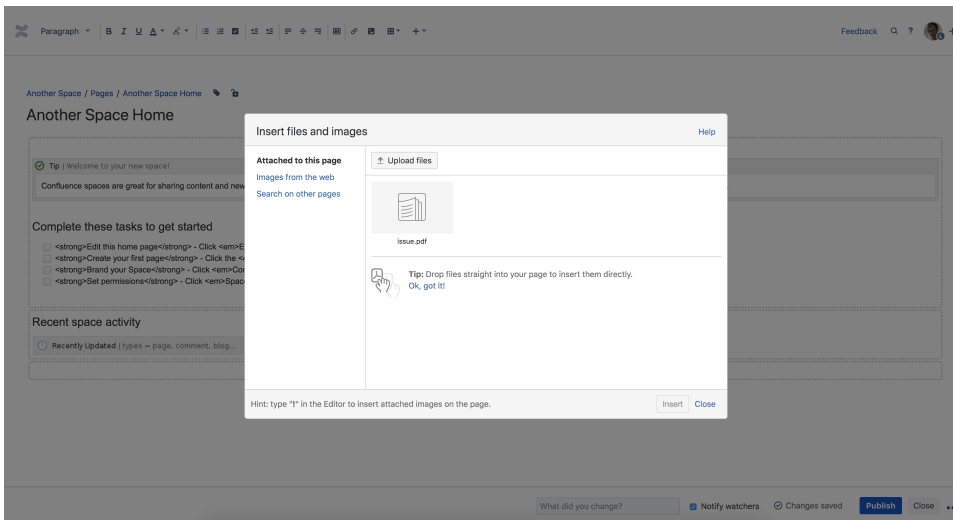
2. Select the **Space** and **Page** you want the **Xporter for JIRA Cloud report** to be attached to. For a final check, click *Test File Server* again and then click *Create*.
3. You should see the integration added to your File Servers list.

Congratulations! You have successfully integrated your Confluence instance with **Xporter for JIRA Cloud**.

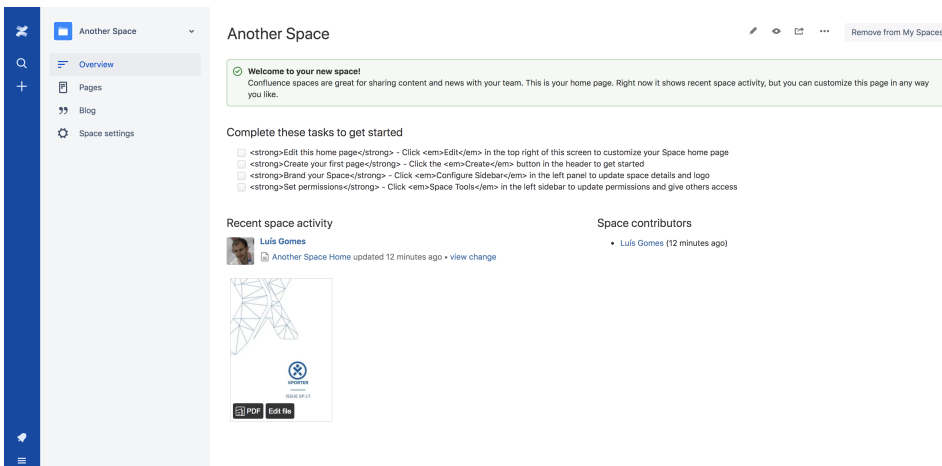
Test Confluence integration

To test your Confluence integration, create a post function to attach an **Xporter for JIRA Cloud report** to the page you previously set up.

1. Create a post function that uses the **Confluence integration** previously added. [Here](#) you can find more about post functions and how to setup one.
2. Perform the action to trigger the post function.
3. Navigate to the **Confluence** instance. Select the page defined in the **Confluence** integration, and click *edit*.
4. Click the *plus sign* > *Files and images*.
5. In the *Attached to this page* tab you should have the **Xporter for JIRA Cloud report** you defined in the post function. Add the attachment to the page and click *Save*.



6. Now you should see your report inserted into the page.



If you have any questions, or if you have trouble configuring the **Xporter Connector for Confluence**, please do not hesitate to ask for support [here](#).