

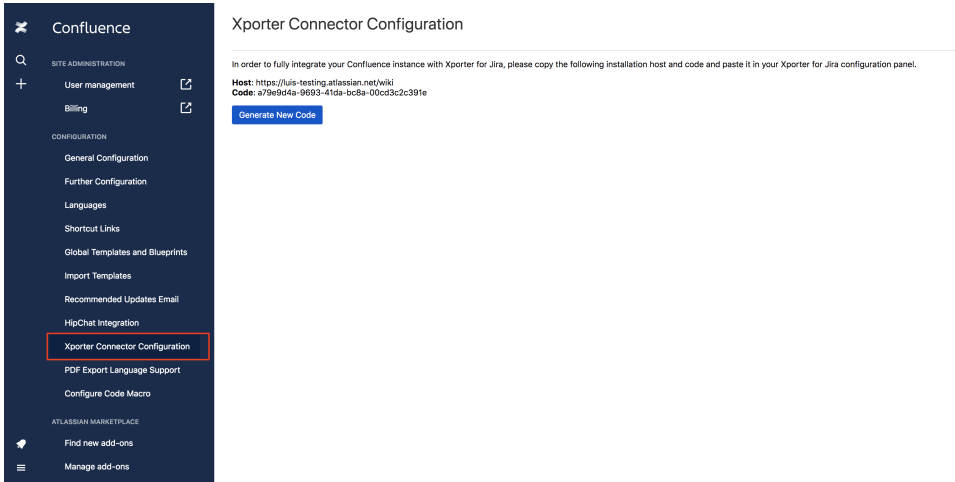
# Xporter Connector for Confluence

To set up Confluence integration for **Xporter for JIRA Cloud**, please follow these steps:

- [Xporter Connector Installation](#)
- [Test Confluence integration](#)

## Xporter Connector Installation

1. Open the Confluence instance you want to integrate with **Xporter for JIRA Cloud** and navigate to Settings.
2. Under the Atlassian Marketplace menu select *Find new apps*. Search the Marketplace for *Xporter Connector for Confluence* and install the add-on. Alternatively, you can install directly from [here](#).
3. After the installation, refresh the page. Under CONFIGURATION, you should now see the **Xporter Connector Configuration** as shown below:



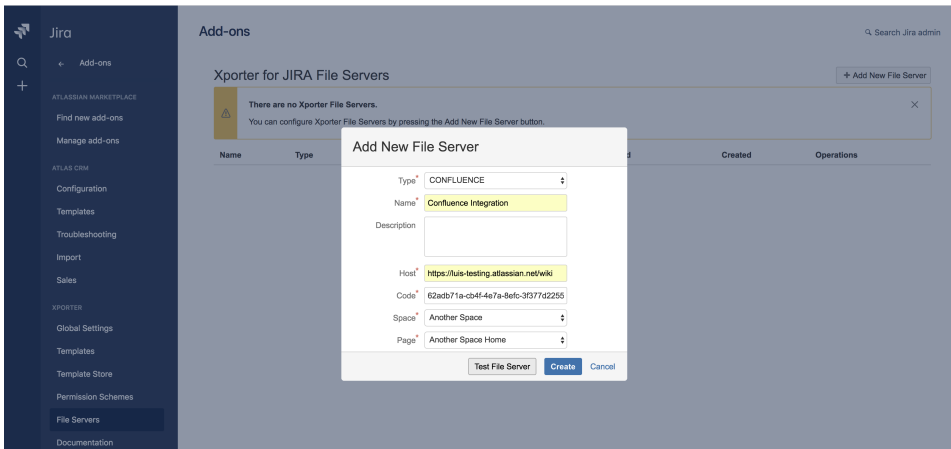
This page allows you to fetch both the host and the installation code you'll need for the next steps of **Xporter Connector** configuration.

Furthermore, you can generate a new installation code, which implies that other integrations you've previously setup for this host will stop working.

## Add Confluence integration in Xporter for JIRA Cloud

Now that you have both the host and the installation code, you are ready to set up the Confluence integration in **Xporter for JIRA Cloud**. To do so,

1. Navigate to the **Xporter Cloud** configuration panel (Jira Settings > Apps > Xporter > File Servers).
2. Add a new File server. You will be prompted with a modal:



In the *Type* field, select *CONFLUENCE*. Fill the *Name* you want the Confluence integration to have. In the *Host* and *Code* fields, paste the values you fetched from the **Xporter Connector** configuration page. Click *Test File Server*.

1. You will get a message stating that the connection to the Confluence instance was successfully done, and both **Space** and **Page** fields are now populated.

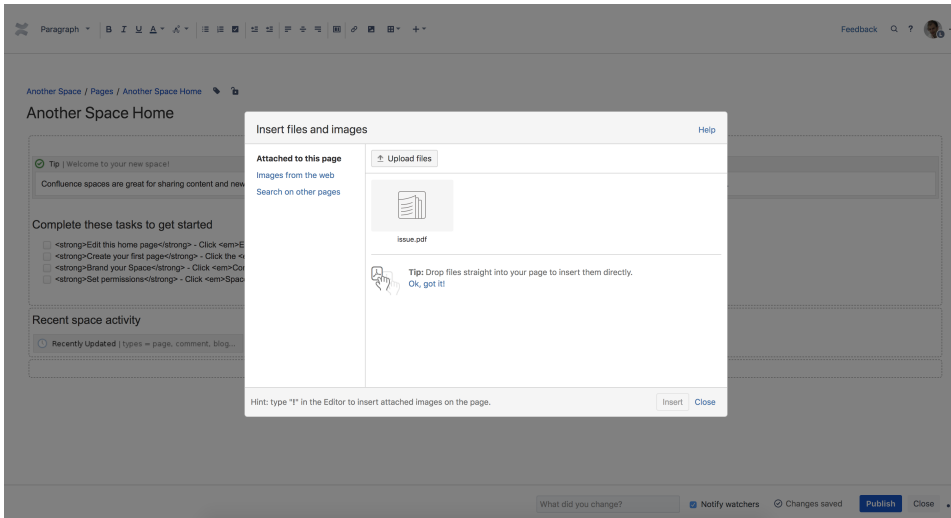
2. Select the **Space** and **Page** you want the **Xporter for JIRA Cloud report** to be attached to. For a final check, click *Test File Server* again and then click *Create*.
3. You should see the integration added to your File Servers list.

**Congratulations!** You have successfully integrated your Confluence instance with **Xporter for JIRA Cloud**.

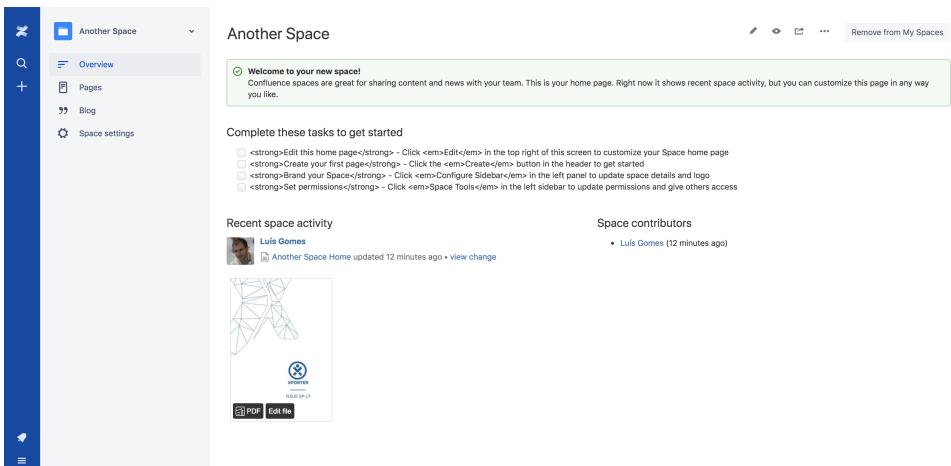
## Test Confluence integration

To test your Confluence integration, create a post function to attach an **Xporter for JIRA Cloud report** to the page you previously set up.

1. Create a post function that uses the **Confluence integration** previously added. [Here](#) you can find more about post functions and how to setup one.
2. Perform the action to trigger the post function.
3. Navigate to the **Confluence** instance. Select the page defined in the **Confluence** integration, and click *edit*.
4. Click the *plus sign* > *Files and images*.
5. In the *Attached to this page* tab you should have the **Xporter for JIRA Cloud report** you defined in the post function. Add the attachment to the page and click *Save*.



6. Now you should see your report inserted into the page.



If you have any questions, or if you have trouble configuring the **Xporter Connector for Confluence**, please do not hesitate to ask for support [here](#).